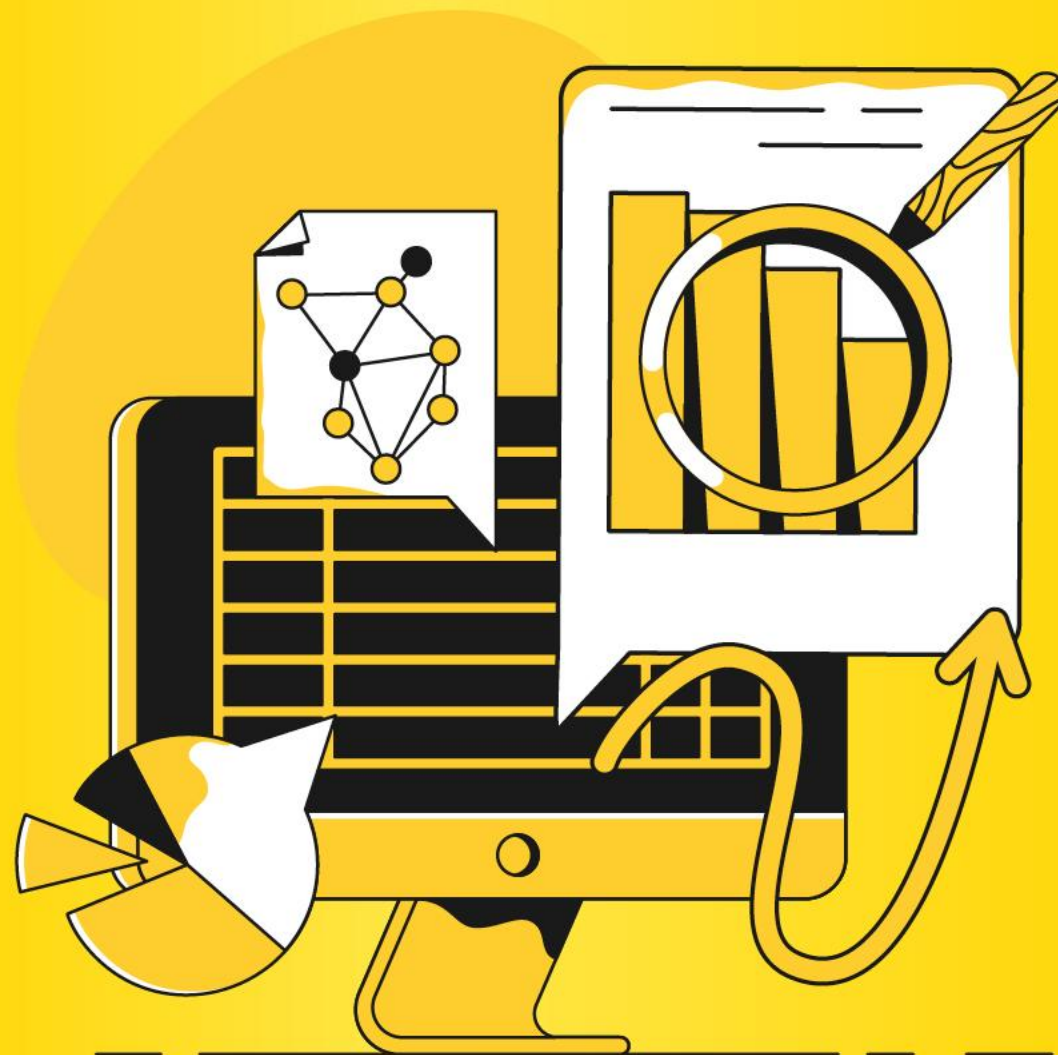




# Power BI Day

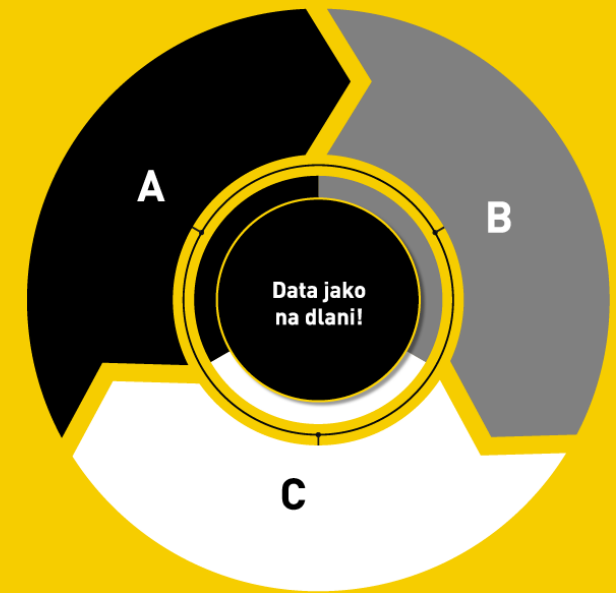
Hybridní konference

12. 3. 2026 | Praha/ONLINE



# Jak na Power BI Report Server

Kateřina Saryčeva | PowerBI Day 2026



# Katerina Saryceva

## Data Solutions Lead in Ness Czech

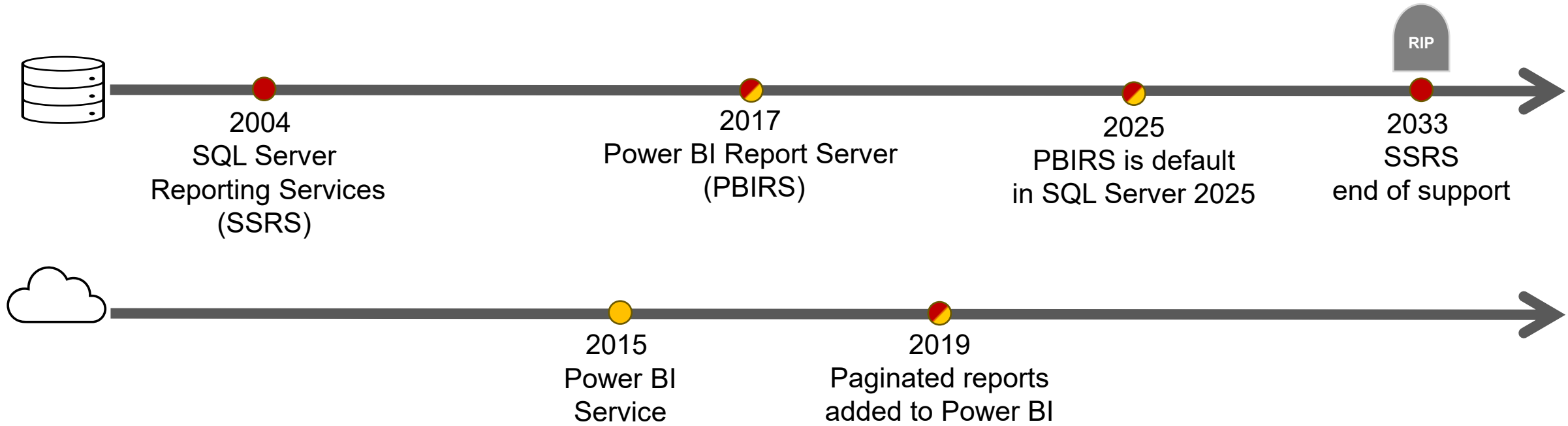
- Migration projects to Power BI Service
- On-premises Power BI reporting



Fabric Analytics Engineer Associate  
Power BI Data Analyst Associate  
Power Automate RPA Developer Associate



<https://www.linkedin.com/in/katerina-saryceva/>



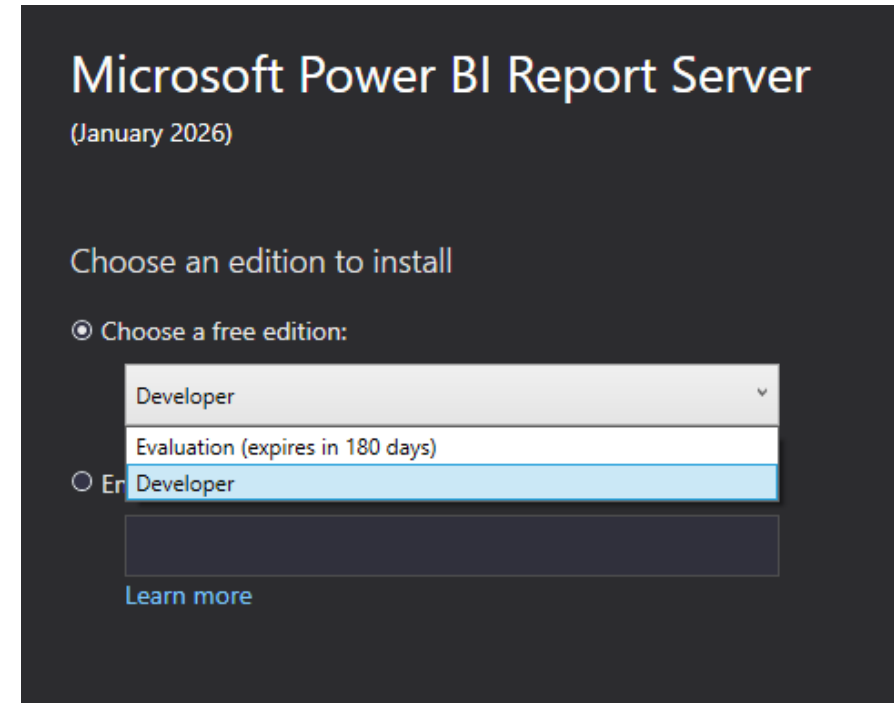
Starting with SQL Server 2025, Microsoft is consolidating all on-premises reporting services under Power BI Report Server. new versions of SQL Server Reporting Services (SSRS) will be released.

**Power BI Report Server is now the default on-premises reporting solution for SQL Server.**

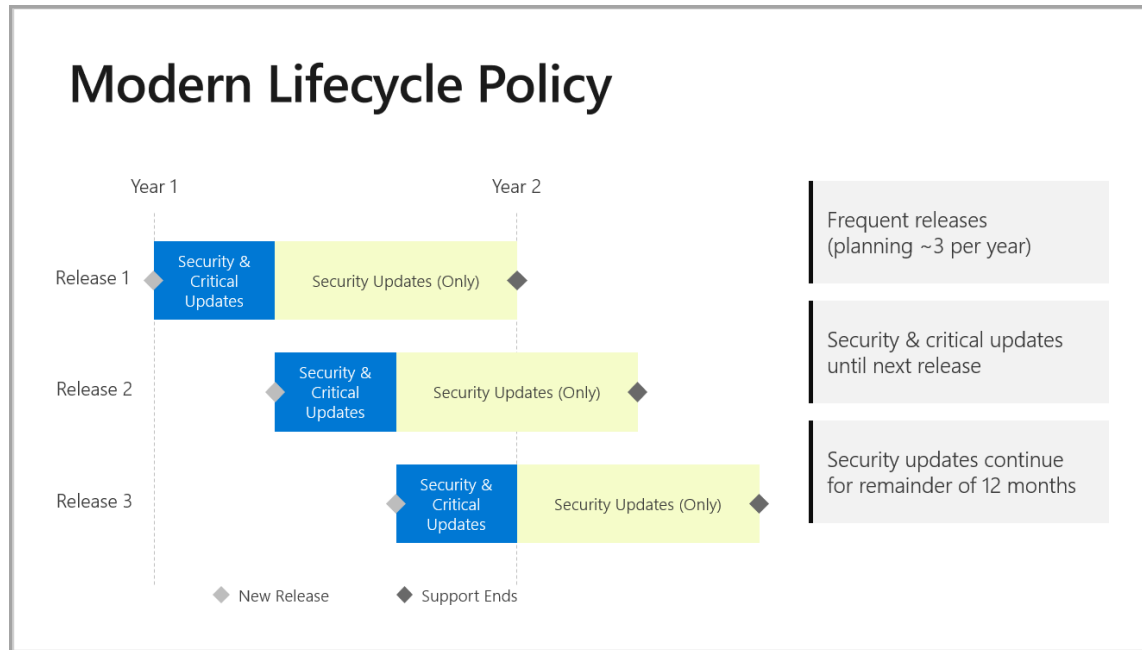
# History

- **FREE Developer & Evaluation licenses**
- **Any SQL Server 2025**
- Fabric F64+
- Power BI Premium per Capacity
- SQL Server 2016-2022 Enterprise with Software Assurance (SA)

*“Power BI Pro license required to publish Power BI reports” - to Service*



- 3 times per year
- Critical Updates only for the latest version
- Power BI Desktop version must match your server



# Updates

# NO

Preview features (PBIR, TMDL...)  
Dashboards  
Shared semantic models  
Copilot / AI features  
Analyze in Excel  
Personal Bookmarks  
Workspaces  
and more...



HW & Administration expenses

Limited integration, monitoring, governance...

## Limitations

- Full data sovereignty
- Control hardware sizing, update timing, and security configuration
- Comes with SQL Server – no additional license
- No viewer licenses
- Works without internet



# Benefits

## Server

Strict data residency requirements

Air-gapped or regulated environments

SQL Server 2025 license already owned

Low internet connectivity at sites

Basic reporting features



## Service

Rapid deployment and scalability

Latest AI/Copilot features required

External sharing and SaaS integration

Self-service reporting

Advanced Analytics



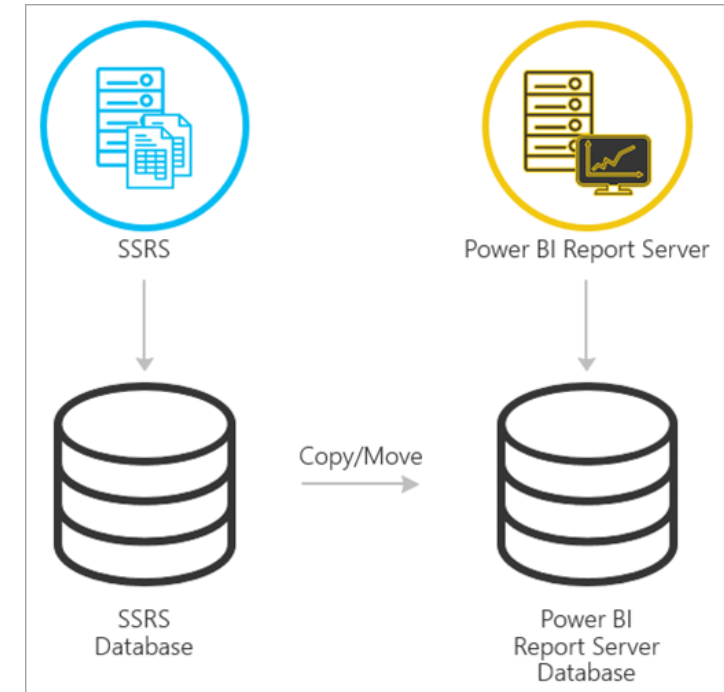
# Server or Service?

## SSRS → PBIRS

Existing RDL reports are **fully compatible** with PBIRS, and customers can use the [SSRS to PBIRS migration guide](#) to support the transition.

## SSRS → Power BI Service

- There are limitations
- SSRS 2016+: use Publish button
- Earlier versions: use [RDL Migration Tool](#)



# Migration

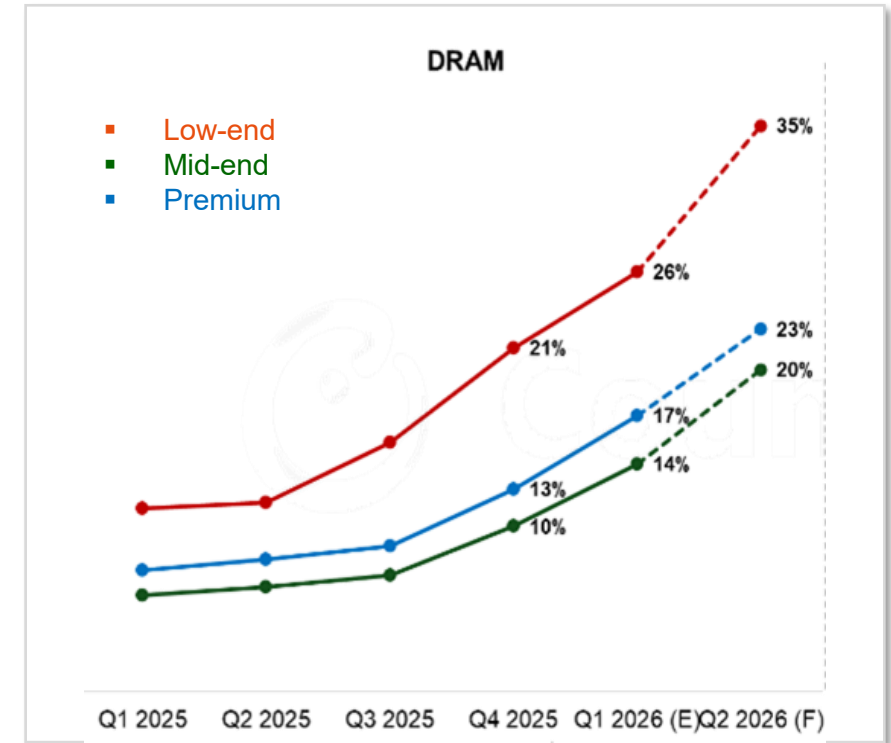
**Processor:** x64 only, 2.0 GHz or faster

**Memory:** at least 4 GB RAM

**OS:** Windows Server / Windows 11

**Database:** SQL Server 2014 SP3 or higher

[See Capacity planning guidance for Power BI Report Server](#)



# Requirements



## Web Portal

Browser-based interface for managing reports, KPIs, Excel files, and subscriptions. Primary user-facing layer.



## ReportServer DB

SQL Server database storing report definitions, security policies, schedules, and metadata.



## ReportServerTempDB

Temporary storage for report sessions, cached data, and snapshot processing during execution.

# Main components

Tool	Purpose
Web Portal	Manage reports, folders, security roles, subscriptions, KPIs
Report Server Configuration Manager	Initial setup, service accounts, database connection, URLs, encryption keys
SQL Server Management Studio (SSMS)	Manage ReportServer database, schedules, encryption keys, server roles
PowerShell / REST API	Automation and deployment

# Administration

 **Server**

ExecutionLog3 view

Server logs

SQL Server monitoring

SQL Agent jobs

Default retention period is 60 days

 **DIY** **Service**

Capacity Metrics App

Usage Metrics

Audit logs

Purview

APIs

## Authentication

Windows Authentication  
(Active Directory)

## Folder-level permissions

Similar usage as  
Workspaces in Service

## Firewall

Never use port 80

## Encrypt communication

Configure HTTPS

## Data source connection

Use service account, but  
try to impersonate the  
user

Use reverse proxy  
for external sharing

# Security

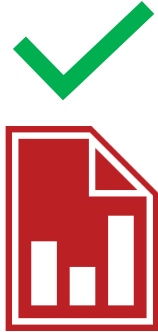
Select one or more roles to assign to the group or user.

<input type="checkbox"/> Role ^	Description
<input type="checkbox"/> Browser	May view folders, reports and subscribe to reports.
<input type="checkbox"/> Content Manager	May manage content in the Report Server. This includes folders, reports and resources.
<input type="checkbox"/> My Reports	May publish reports and linked reports; manage folders, reports and resources in a users My Reports folder.
<input type="checkbox"/> Publisher	May publish reports and linked reports to the Report Server.
<input type="checkbox"/> Report Builder	May view report definitions.

# Roles



Power BI  
Desktop **RS**  
(PBIX)



Microsoft  
Report Builder  
(RDL)



Power BI  
Desktop

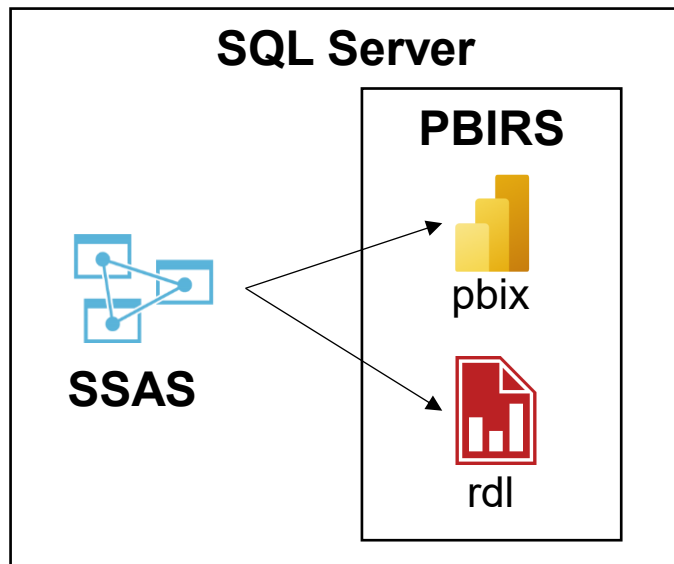


Power BI  
Report Builder

**Development software**

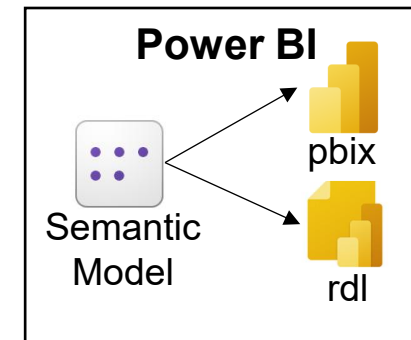
 **Server**

Semantic model is a part of the report  
 SSAS Tabular is used to centralize logic  
 Dataset = one data source query



 **Service**

Shared semantic models  
 Dataflows  
 Dataset = data model



# Datasets

Connection type	Server	Service
Import	Supported	Supported
DirectQuery	Limited support	Fully supported
Live connection (SSAS)	Supported (common enterprise scenario)	Supported
Composite models	Not supported	Fully supported
DirectLake	Not supported	Supported (Fabric)
Dataflows / Lakehouse	Not supported	Supported
Gateway-based sources	Not needed (server is on-prem)	Required for on-prem sources

**Incremental refresh only in SSAS Tabular**

# Data connection

 **Server**

Built-in schedules  
(with SQL Server Agent in backend)  
Unlimited refresh count  
No event-driven refresh

 **Service**

Built-in schedules  
Up to 8/48 refreshes per day  
with standard scheduler  
Event-driven refresh with  
API integration



# Orchestration

**Distribution method**

**PBIRS**

**Power BI Service**

Web portal access	Yes (internal portal)	Yes (workspace/app)
Email subscriptions	Yes (Dynamic only for RDL)	Yes
Scheduled report delivery	Yes	Yes
Sharing link	No	Yes
Apps / packaged content	No	Yes
External sharing / B2B	No	Yes
Embedding in applications	Basic (iframe / portal integration)	Advanced embedding APIs
Mobile access	Supported	Supported

**SQL Server Agent must be running for Subscriptions**

Microsoft has [announced](#) that Office Online Server (OOS) will be retired effective December 31, 2026. As a result, **PBIRS users will longer be able to host Excel workbooks in PBIRS using OOS after November 2026**, in accordance with the PBIRS Support Timelines Policy. Additionally, beginning with the January 2026 PBIRS release, configuration of PBIRS to use OOS for hosting Excel workbooks will longer be supported. Visit this [deprecation announcement blog](#) for more details.

## Upcoming changes



# Power BI Day

Děkuji za pozornost.

